

GAME MANUAL
MANUEL DE JEU
GEBRUIKERSHAND-
LEIDING

MANUALE GIOCO
MANUAL DEL JUEGO
SPIELHANDBUCH



BATMAN™ RETURNS

ATARI

LYNX™

VIDEO GAME CARD • CARTE DE JEU



<http://www.replacementdocs.com>

Atari Corporation is unable to guarantee the accuracy of printed material after the date of publication and disclaims liability for changes, errors, or omissions. Reproduction of this document or of any portion of its contents is not allowed without the specific written consent of Atari Corporation.

BATMAN and all related elements are the property of DC Comics Inc. TM & (C) 1992. All rights reserved.

The following are TM & (C) 1992 of DC Comics Inc.: Batman, Oswald Cobblepot, The Penguin, Catwoman, Bruce Wayne, Batmobile, Caped Crusader, Gotham City, Batarang, The Red Triangle Circus Gang, Selina Kyle, Penguin Commandos and Max Shreck.

Atari, the Atari logo and Lynx are trademarks or registered trademarks of Atari Corporation. Copyright 1992 Atari Corporation, Sunnyvale, CA 94089-1302. All rights reserved.

BATMAN RETURNS

Oswald Cobblepot, better known as *The Penguin*, has just ruined *Gotham City's* gala Christmas party. Now *The Penguin* and *Catwoman* are terrorizing the city. In a flash, *Bruce Wayne* changes into the world's most famous super-hero, *Batman*! He revs up his *Batmobile* and races out in hot pursuit of his mortal enemies. But is it too late?

Getting Started

1. Insert your *Batman Returns* game cartridge in your Lynx.
2. Turn on the Lynx.
3. The *Batman Returns* title screen appears.
4. Press A or B. The Wave Description screen appears. Wait a few seconds, or press A or B, to start the game.

Playing the Game

Batman Returns is an action adventure in which you must guide the famed *Caped Crusader* through *Gotham City* as he tries to defeat *The Penguin* and *Catwoman*.

Use the joystick to move *Batman* through the city. Press down on the joystick to make *Batman* duck. Press right or left to move in the desired direction. The A button makes *Batman* use the currently selected weapon (Option 1 selects the weapon). Press B to make the

Caped Crusader jump. During the game, you may need to press a button and the joypad at the same time.

The top left corner of the game screen shows the currently selected weapon. If *Batman* has a weapon other than his fists, the weapon icon will change when you press Option 1. The score appears in the top right corner. *Batman's* health bar is at the bottom of the screen (Screen 1). (Screen numbers in these instructions refer to the Gallery of Game Screens at the end of this manual).

Whenever *Batman* gets hit by an enemy or a weapon, his health decreases. When *Batman* runs out of health, his quest and your game are both over!

During the game, pressing Option 2 will turn the music on and off.

As *Batman* proceeds on his quest, he must be on the lookout for the following special powerups:

Points: 1000 points plus 1000 points for each Points powerup picked up before.

Health: increases *Batman's* health by 25 percent.

Batarang: Gives *Batman* ten *Batarangs* (Screen 2).

Acid Vial: Gives *Batman* seven vials of deadly acid.

Batman cannot succeed without picking up these items. Without the *Batarangs* and acid, *Batman* must fight fearful foes with only his fists.

The game is divided into four waves. Each wave is more difficult than the last.

WAVE 1: The Red Triangle Circus Gang™

The Penguin's Red Triangle Circus Gang has kidnapped the beautiful *Ice Princess* and is pillaging *Gotham Plaza*. What a way to ruin Christmas! *Batman*, ever the hero, rushes in and takes on the *Red Triangle Circus Gang* single-handedly (Screen 3). It will take a strong arsenal and lightning-fast reactions to keep from getting creamed by these powerful enemies. If he can defeat the gang, *Batman* must meet *The Penguin* in his *Duck Vehicle*.

WAVE 2: Batman Confronts Authorities

Surprise! *Selina Kyle* is really *Catwoman*, and she has teamed up with *The Penguin*! She is making her escape atop *Gotham City's* tallest buildings. Only *Batman* can stop her. But it won't be easy. *The Penguin* has convinced the authorities that *Batman* murdered the *Ice Princess* and the cops are hot on his trail (Screen 4). The police will do all they can to stop *Batman* dead in his tracks. And rest assured that *Catwoman* will not make things any easier!

Batman must fight the police as he jumps from rooftop to rooftop in pursuit of *Catwoman*. If he takes too many shots, or if he slips and falls from a tall building, the game will be over. If *Batman* can survive long enough to trap her, *Catwoman* will fight tooth and claw to get away. And with the speed and agility of a cat, she is a formidable foe indeed.

WAVE 3: Beneath Gotham City

Well, *The Penguin* has sunk really low this time. In fact, he has gone into the *Gotham City* sewers. *Batman* must rush through the sewers in search of his enemy. *The Penguin* has unleashed his huge band of birds, the *Penguin Commandos*, in an attempt to destroy the city. These little penguins may be small, but they pack a powerful punch (not to mention deadly missiles). (Screen 5).

And if that's not bad enough, millionaire industrialist *Max Shreck* has used the sewers as his personal toxic waste dump. *Batman* must destroy the *Penguin Commandos* while avoiding missiles and radioactive materials as he seeks out the commando headquarters. Of course, once he gets to the headquarters, he will REALLY have his hands full!

WAVE 4: Batman Discovers the Arctic World

After a long and treacherous journey, *Batman* has finally discovered *The Penguin's* icy lair. It is a dangerous place, with ice, water, and a rotting pier. Every step *Batman* takes may be his last! Of course, *The Penguin's* hideout is not unguarded. *Penguin Commandos* and *Emperor Penguins* will defend their master's home to the finish (Screen 6). If they destroy *Batman*, or if *Batman* falls into the icy water, *Batman's* quest will come to an abrupt and rather unpleasant end. So will your game. If *Batman* can defeat the guards, he must fight the most dangerous foe of all, *The Penguin* himself!

But fighting *The Penguin* is not enough. *Batman* must also save *Max Shreck* so he can be turned over to the authorities. To do this, he must disable the pulley which is lowering *Shreck's* cage into a pool of toxic waste. By doing so, *Batman* also destroys *The Penguin's* cooling system. As the temperature rises, *The Penguin* weakens. If *Batman* can save *Shreck* and defeat *The Penguin*, he will prove that he is truly the World's Greatest Super-hero. But more important, he will save *Gotham City*!

Strategy

Be quick. It takes lightning-fast reactions to jump, fight and shoot while being attacked by many different enemies at the same time.

Never stand in front of a moving motorcycle.

Watch for powerups. They are not always easy to see, but you can't possibly win without them.

Beware of gifts. They look nice, but their contents are not always that pleasant!

Scoring

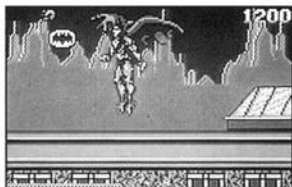
Points are awarded for destroying enemies. The more harm an enemy can do to *Batman*, the more points you get:

<i>Enemy:</i>	<i>Points:</i>
<i>Thin Clown</i>	800
<i>Fat Clown</i>	400
<i>The Strongman</i>	500
<i>Motorcycle Bikers</i>	2000
<i>Knifethrower Dame</i>	200
<i>Organ Grinder</i>	700
<i>Cops</i>	300-400
<i>Penguin Commando</i>	1000
<i>Emperor Penguin</i>	1500
<i>Duck Vehicle</i>	10,000
<i>Catwoman</i>	20,000
<i>The Penguin</i>	50,000

After your first game, your last game's score is displayed in the upper right-hand corner of the title screen.



Screen 1



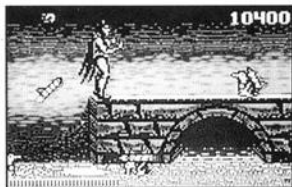
Screen 2



Screen 3



Screen 4



Screen 5



Screen 6

Programmed by:	Eric Ginner Jerome Strach
Art and Animation by:	Susan G. McBride Eric "Coyote" Elliott Melody Rondeau Robb Mariani Phil Temple Eric Blumrich
Sound and Music by:	Bob Vieira
Produced by:	John Skruch



Copyright 1992, Atari Corporation
Sunnyvale, CA 94089-1302
All rights reserved.

C398105-101 Rev. A
Printed in Hong Kong.
G. C. 7. 1992