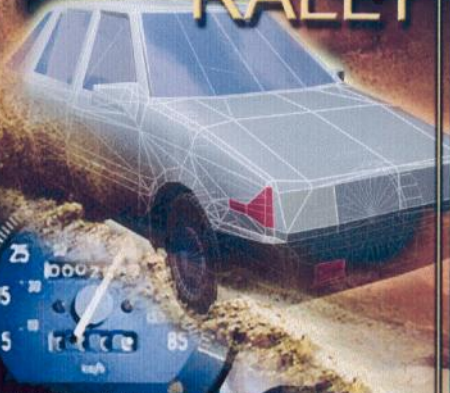


Songbird Productions

Presents
**Championship
RALLY™**



Copyright and TM 2000 Songbird Productions. All rights reserved.

LYNX
VIDEO GAME CARD

<http://www.replacementdoes.com>

Welcome to Championship Rally! Get ready for the roughest high-speed racing your Lynx has ever seen!

Play Modes:

Tournament -- Compete against 3 other Lynx racers in several seasons of non-stop action! Unlock new tracks as you go!

Single Race -- Hone your rally skills on any unlocked track in this winner-takes-all competition.

Time Trial -- Race against the ultimate competition: yourself!

Versus -- Head-to-head racing when you connect two Lynxes using a comlynx cable (two copies of Championship Rally required).

Controls:

Button A -- Accelerate

Button B -- Brake

Left/Right -- Steer left and right

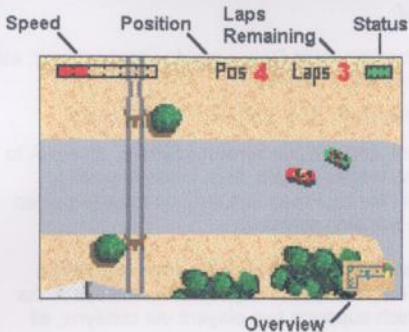
Opt 2 -- Toggle overview map

Reset -- Enabled except in Versus

Flip -- Enabled

Pause -- Enabled

NOTE: As you collide with objects, your car accumulates damage and the status bar will decrease. Only a repair wrench can fix your car. You can set the amount of damage cars will take using the 'Damage force' setting.



Use the options screen to control the race settings. The "Comp. Speed" and "Comp. Acc." refer to the top speed and rate of acceleration for Lynx-controlled cars.

There are dangers and bonuses hidden on the tracks. Look for movable objects, oil spills, speed boosts, potholes, and more!

Note that Tournament Mode supports both New games and Loaded games. You must write down your password after each season, and re-enter it at the Load screen to resume your tournament at a later time.

Getting Started:

1. Insert your Championship Rally cartridge in your Lynx, with the label side facing the Lynx.
2. Turn on the machine. The Songbird logo appears.
3. Wait a moment, and the title screen appears. Press A to advance to the credits screen, then press A again to reach the Main Menu. Press Option 2 on the title screen to turn off the scrolling message.
4. Use the joystick to select between Tournament, Single Race, Time Trial, Versus, or High Scores. Versus is the only mode which supports two players via comlynx, all other play modes are for one player only.
5. Select the appropriate options and/or track, and begin the game. You can exit most screens by pressing either B or Reset.